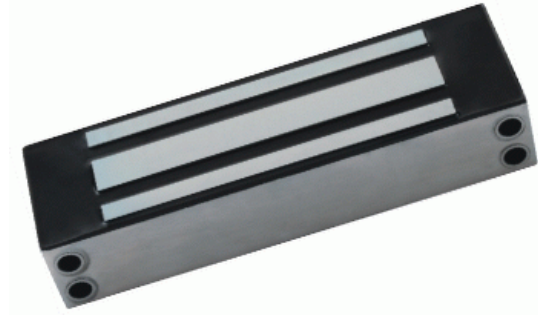


EM Lock – 1200Lbs

Single Door Magnetic Lock(Waterproof)



Features

- > Collinear Load Test 500Kg, 1200pounds
- > Dual Voltage 12 or 24 VDC (optional)
- > The Standard Voltage is 12VDC when Finished
- > MOV Provides Reverse Current Protection
- > Suitable For Wooden Door, Glass Door, Metal Door, Fireproof Door
- > The Shell Finished with Stainless Steel, more Strongly and Durably
- > 100 percent waterproof, All the Part Pressurize in resin.
- > Special Waterproof, Indoor and Outdoor can be install.
- > Design with no Mechanical Bolt, Depending on the powerful Magnetic force.
- > Increase the holding Force, Dual Insulative Housing.
- > CE Certificate by European Union, MA Certificate by China Public Security office.

Parameters

- > Lock Size: 220Lx69Wx36H(mm)
- > Armature plate: 185Lx60Wx13H(mm)
- > Holding Force: 500kg(1200Lbs)
- > Voltage: 12/24VDC+10%
- > Current Draw: 12V/420mA 24V/210mA
- > Optional Bracket: AB-500L AB-500ZL
- > Suitable for: Wooden door , Glass door ,Metal door , Fireproof door
- > Signal Output: Need to order YM-500W-S
- > Surface Temp: $\leq +20^{\circ}\text{C}$
- > Operating Temp: $10\sim +55^{\circ}\text{C}$ (14-131F)
- > Suitable Humidity: 0~90% (non-condensing)
- > Finishes for Shell: Anodized aluminum
- > Finishes for Magnetic: Zinc
- > Finishes for Armature: Zinc
- > Weight: 4.5kg