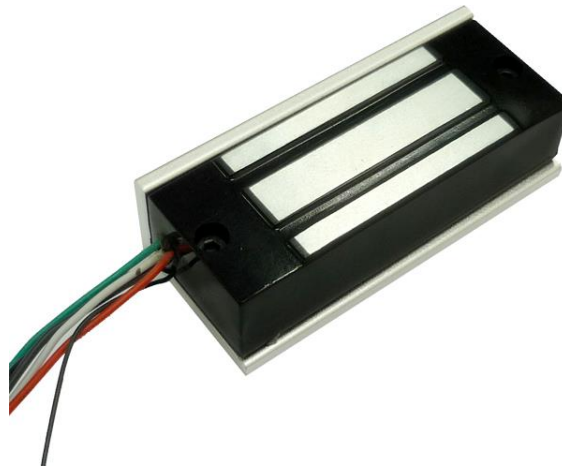


## EM Lock – 140Lbs

---

### Single Door Magnetic Mini Lock with Signal Output (140Lbs)



#### Features

- > Collinear Load Test 70kg, 120pounds
- > MOV Provides Reverse Current Protection
- > Anti-Residual Magnetism Designed
- > High Strength Material, Anodized Aluminum Housing
- > Design with no Mechanical Failure
- > Increase the holding Force, Dual Insulative Housing
- > CE Certificate by European Union, MA Certificate by China Public Security Office
- >

#### Parameters

- > Lock Size: 90Lx33Wx19H (mm)
- > Armature plate: 90Lx24Wx9.3H (mm)
- > Holding Force: 70kg (120Lbs)
- > Voltage: 12-24VDC+10%
- > Current Draw: 12V/300mA    24V/150mA
- > Suitable for: File Cabinet, Display Cabinet
- > Surface Temp:  $\leq +20$ centigrade
- > Operating Temp: -10 centigrade to +25 centigrade (14-131F)
- > Suitable Humidity: 0~90% (non-condensing)
- > Finishes for Shell: Anodized aluminum
- > Finishes for Magnetic: Zinc
- > Finishes for Armature: Zinc
- > Weight: 0.5kg