

MAC/STING

Electromechanical automation for swing gates



MAC



STING

230V AC operators without control board

MAC

COD.	Art.				OTHER CHARACTERISTICS
625010	MAC		334		For leaves up to 3m length

STING unlocking device with key

COD.	Art.				OTHER CHARACTERISTICS
625050	STING		334		For leaves up to 3m length
625052	STING/EN		334		With encoder, for leaves up to 3m

For MAC: fixing plate to be welded included

For STING: adjustable fixing plates to be screwed included (art. MAC/SFR)

Control board to complete the installation: control board cod. 677610 art. NET230N/C (with box)

24V DC operators without control board

MAC

COD.	Art.			OTHER CHARACTERISTICS
625040	MAC/24		334	For leaves up to 3m length

STING unlocking device with key

COD.	Art.			OTHER CHARACTERISTICS
625051	STING/24		334	For leaves up to 3m length

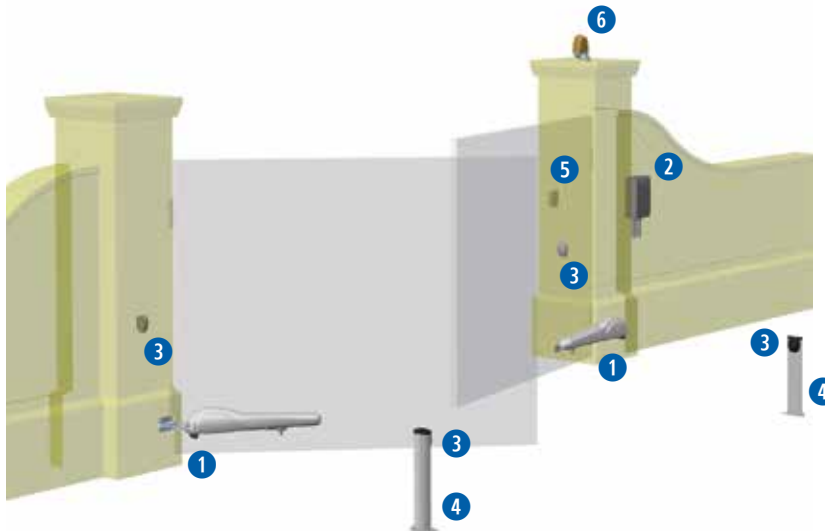
For MAC: fixing plate to be welded included

For STING: adjustable fixing plates to be screwed included (art. MLS/SFR)

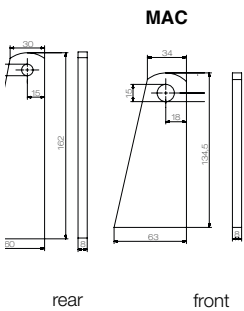
Control board to complete the installation: control board cod. 678261 art. NET24N/C (with box)

TECHNICAL INFO	MAC - STING	STING/EN	MAC/24 STING/24
Motor power supply (V)	230V AC \pm 10 % (50/60 Hz)		24V DC
Maximum power absorption (W)	300		60
Max thrust (N)	1650		1000
Duty cycle (cycles/hours)	18	22	40
230V AC \sim \pm 10 % (50/60 Hz)	90		
Built-in capacitor (μ F)	8		/
Operating temperature ($^{\circ}$ C)	-20 \div 50		
Motor thermal protection ($^{\circ}$ C)	150		/
90 $^{\circ}$ Opening time (s)	16		
Weight with packing (Kg)	8,8		
Protection level	IP24		

EXAMPLE OF A TYPICAL INSTALLATION



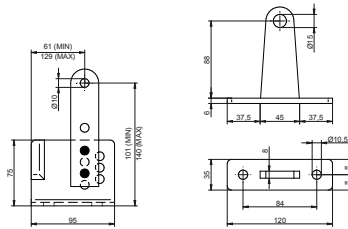
FIXING PLATES



rear

front

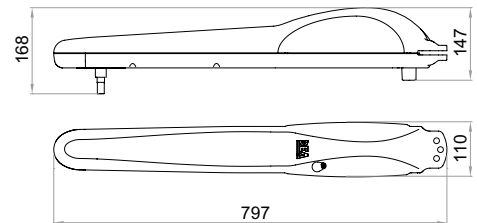
STING



rear

front

DIMENSIONS



 <p>COD. 625020 Art. MAC/EN Electromechanical automation for swing gates</p>	 <p>COD. 677610 Art. NET230N/C Universal digital control board for 1 or 2 operators, 230V with or without magnetic encoder (with box)</p>	 <p>COD. 662080 Art. LINEAR/XS Pair of mini photocell for outdoor installation. Maximum range 20m</p>
 <p>COD. 664000 Art. PILLY/60 55cm column for photocell (2 pcs)</p>	 <p>COD. 629300 Art. MAC/FM Mechanical stops for MAC/STING (2 pcs) - for 1 operator</p>	 <p>COD. 663090 Art. GT-KEY Metal vandal proof keyswitch with two contacts, surface mounted. Supplied with 2 keys.</p>
 <p>COD. 661063 Art. AURAS230 230V flashing light, LED, with integrated antenna, 433 MHz</p>	 <p>COD. 672630 Art. GT2 White 2-channel remote control, 433 MHz, Rolling Code</p>	 <p>COD. 668010 Art. 127 Warning sign</p>


SPECIFIC ACCESSORIES

 <p>COD. 629300 Art. MAC/FM Mechanical stops for MAC/STING (2 pcs) - for 1 operator</p>	 <p>COD. 629320 Art. MAC-LOOK/P Extension for MAC/STING and LOOK rams</p>	 <p>COD. 629312 Art. MLS/SFR Adjustable fixing plates to be screwed</p>
 <p>COD. 629250 Art. COL 515 Anti-fall Stainless steel cable with 2 holes for swing gates</p>	 <p>COD. 629381 Art. SB Back overhead door fixing plate for LOOK, MAC, STING</p>	


OTHER ACCESSORIES




COD. 678261
Art. NET24N/C
Universal digital control board for 1 or 2 operators, 24V with or without magnetic encoder (with box)



COD. 677610
Art. NET230N/C
Universal digital control board for 1 or 2 operators, 230V with or without magnetic encoder (with box)



COD. 661083
Art. AURA24
24V flashing light, LED, with integrated antenna, 433 MHz



COD. 661063
Art. AURA230
230V flashing light, LED, with integrated antenna, 433 MHz



COD. 672630
Art. GT2
White 2-channel remote control, 433 MHz, Rolling Code



COD. 672640
Art. GT4
White 4-channel remote control, 433 MHz, Rolling Code



COD. 662080
Art. LINEAR/XS
Pair of mini photocell for outdoor installation. Maximum range 20m



COD. 662044
Art. LINEAR
Pair of adjustable photocells (180°) with possibility of synchronized operating. Range 20m



COD. 662043
Art. LINEAR/B
Pair of adjustable photocells (180°) with tx supplied by a LiOn battery. Range 7/15m



COD. 681060
Art. COVER
Vandal-proof aluminium cover for LINEAR and LINEAR/B photocells (2 pcs)




COD. 663090
Art. GT-KEY
Metal vandal proof keyswitch with two contacts, surface mounted. Supplied with 2 keys.




COD. 663280
Art. DIGIRAD
Wireless keypad



COD. 663310
Art. DIGIPRO
Digikey with cable and proximity reader




COD. 663311
Art. DIGSLIM
Digikey with cable and proximity reader




COD. 679140
Art. 100GG
Large ABS box, suitable to include any other DEA boxes, to grant a better protection and isolation (IP55)




COD. 664020
Art. PILLY/BASE
Support to be cemented for column




COD. 664000
Art. PILLY/60
55cm column for photocell (2 pcs)



COD. 664010
Art. PILLY/120
100cm column for photocell and accessories (2 pcs)



COD. 629290
Art. BAT
Rechargeable batteries kit for 24V operators, 12V - 1,2Ah, complete with wiring cables



COD. 681053
Art. GREEN ENERGY/N
Solar power kit. Solar panel not included



COD. 136024
Art. 1100
Horizontal electric lock complete with double cylinder and horizontal selvage



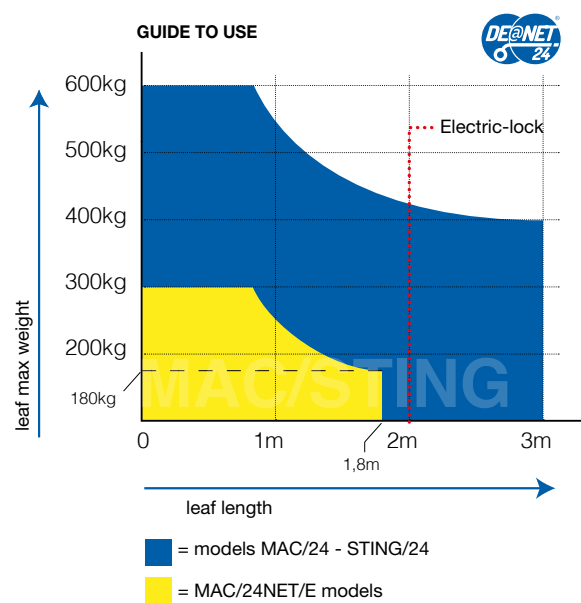
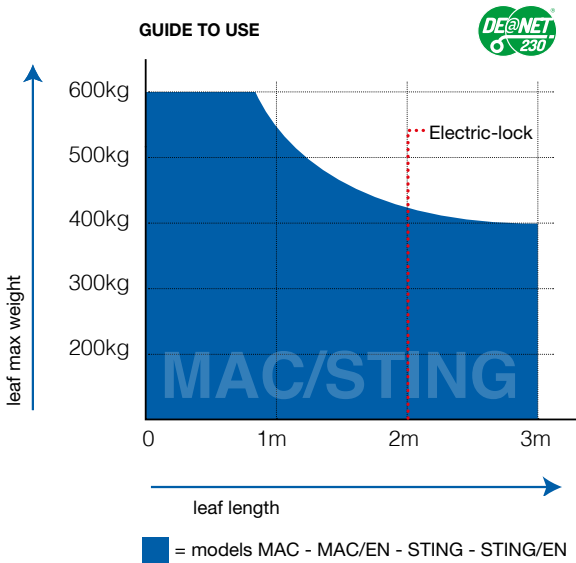
COD. 136006
Art. 110V
Empty electric lock (without European cylinder) with ground selvage



COD. 136005
Art. D
Double European cylinder



COD. 136004
Art. M
half European cylinder



If the leaf length is bigger than 2 meters or if you use reversible models you must install the electric-lock to block the gate in closed position. The height and the leaf structure, as well as the presence of strong wind, can cause the reduction of the value of the data contained in table.