

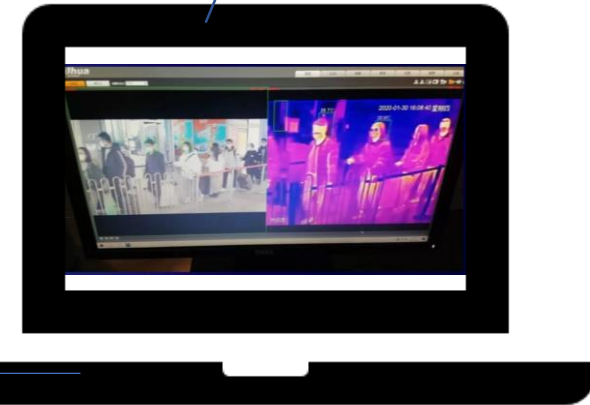
STAND ALONE FEVER SCANNER

Camera and Blackbody will be mounted on a tripod

TPC=BF3221-T



Laptop with DSS Express

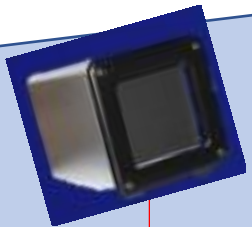


CAT 6

PWR

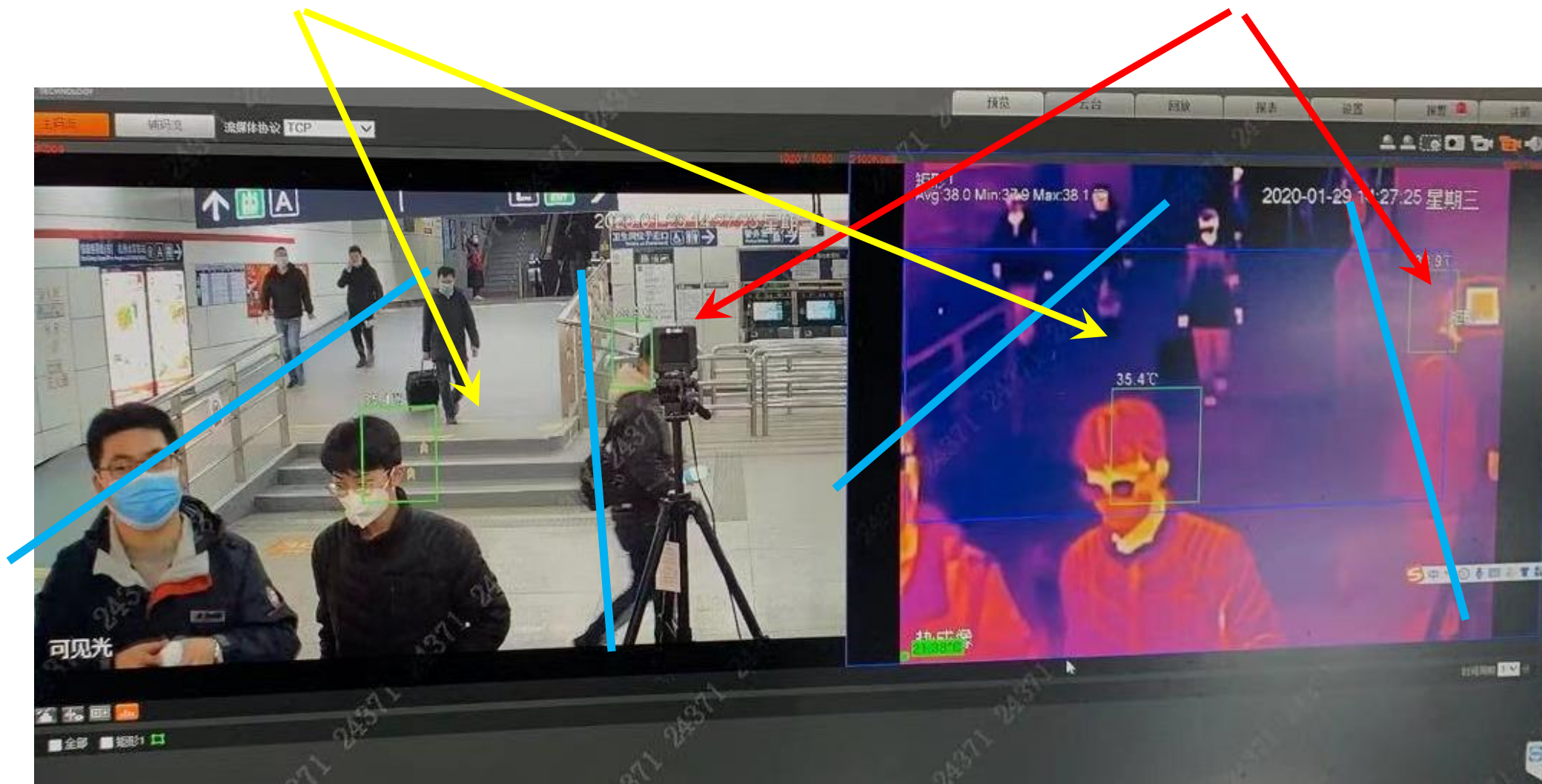
PWR

DH-TPC-HBB1
Blackbody will be mounted on tripod facing the BF3221-T,
At the side of the human traffic sideway.



Deploy the thermal camera facing the human traffic direction,

DH-TPC-HBB1
Blackbody will be mounted on tripod facing the BF3221-T,
At the side of the human traffic sideway.

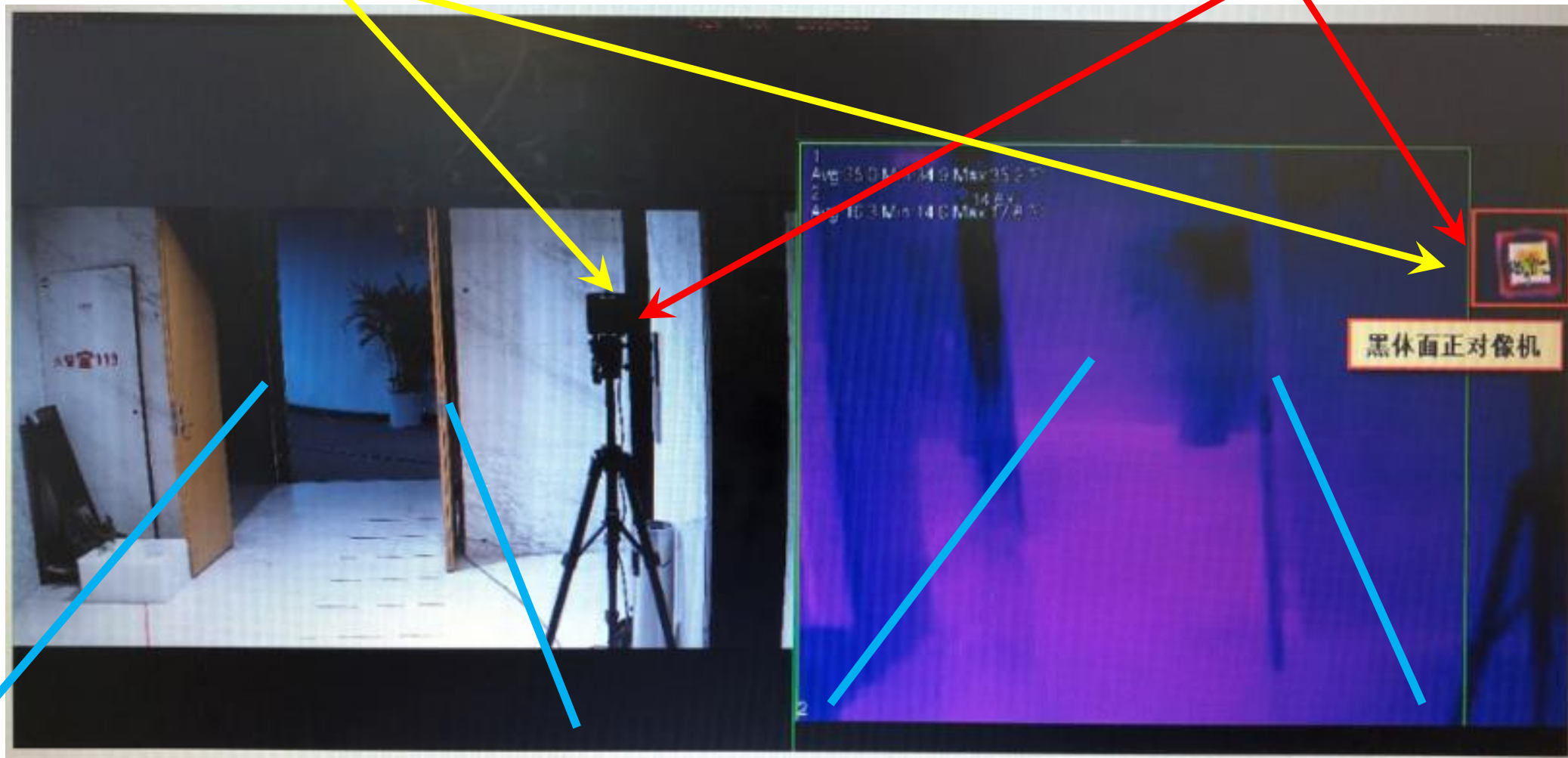


Deploy the thermal camera facing the human traffic direction,

DH-TPC-HBB1

Blackbody will be mounted on tripod facing the BF3221-T,

At the side of the human traffic sideway.



LENS	BLACKBODY DISTANCE	HUMAN HEAD DISTANCE FRM THERMAL CAMERA
3.5mm	2 meter	2 meter
7mm	3 meter	3 meter

REMARKS:

Thermal camera need to deployed higher than the Blackbody, distance between both need to be refer to the thermal camera focal length. Eg, refer to previous table.



REMARKS:

Avoid deployment in dark environment or facing strong backlight, for optimum result.

